





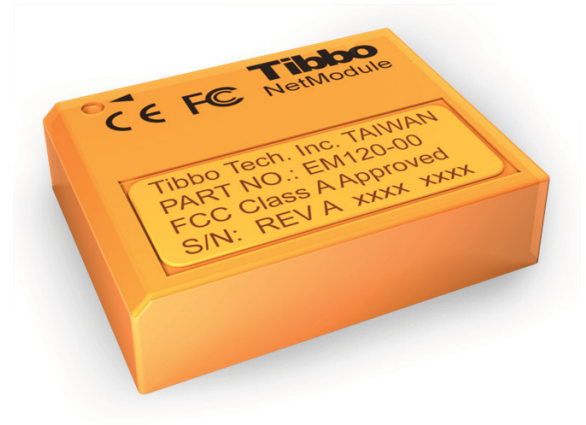


## Features

-  10BaseT Ethernet port
-  Four LED control lines
-  One TTL serial port
-  Low-power (50mA@5V)
-  Five additional I/O lines
-  Sealed (potted) package



## About

The EM120 second-generation serial-to-Ethernet module is an upgrade of Tibbo's original EM100 device.

The EM120 features larger routing buffers, additional I/O lines, and a number of other improvements over the EM100. To achieve smaller dimensions, the module doesn't have Ethernet magnetics onboard.

The EM120 is fully sealed (potted) for maximum environmental protection.

The product is supplied with Tibbo Device Server Toolkit software, which includes Virtual Serial Port Driver for Windows and Linux.

## Specifications

- 10BaseT Ethernet port with built-in magnetics.
- TTL serial port (TX, RX, RTS, CTS, DTR, and DSR lines).
- Five additional I/O lines.
- Four control lines for status LEDs.
- Power: 50mA @ 5V.
- Dimensions: 35x27.5x9.1mm.
- Fully sealed (potted) design.
- Firmware is upgradeable through the serial port or network.

## Functionality

### Serial-over-IP Firmware

- Full- and half-duplex serial port modes.
- Server, client, and server/client network ("routing") modes.
- 8KB data buffers (one in each direction).
- Configuration stored in the EEPROM.
- Detailed status indication via external LEDs.
- Setup through the serial port or network (UDP commands).
- Remote control of all I/O lines including RTS, CTS, DTR, and DSR.

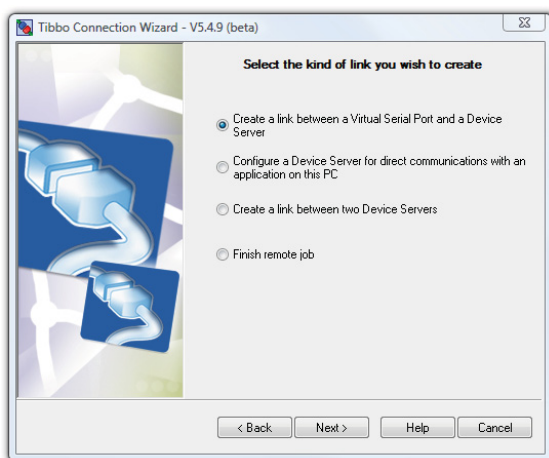
*continued on next page*

## Functionality (continued)

### Serial-over-IP Firmware(continued)

- “On-the-fly” commands for immediate serial port configuration.
- Serial-side “modem” commands for network connections control.
- Direct control of ADSL modems.
- Supports UDP, TCP, ARP, ICMP (ping), DHCP, PPPoE, LCP.

## Tibbo Device Server Toolkit (TDST) Software



All Tibbo device servers are supplied with free software which includes:

**Connection Wizard:** guides you step-by-step through creating data links between a computer and a device server, or between two device servers.

**DS Manager:** used to locate, setup, manage, monitor, and upgrade Tibbo device servers and compatible devices.

**Virtual Serial Port Driver (VSPD):** turns serial ports of Tibbo device servers into remote COM ports of your PC.

**Tibbo Monitor:** logs the activity of Virtual Serial Ports.

For more information, see <http://soi.tibbo.com/tdst.html>